

Oilfield Challenges CHEMICAL

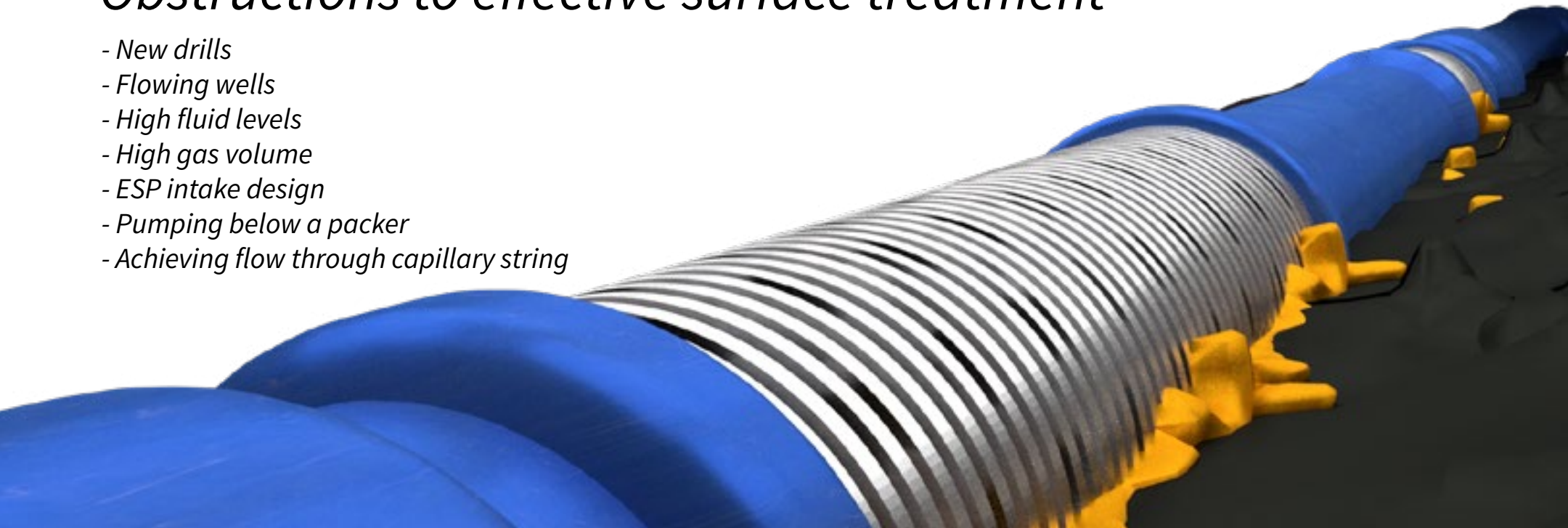


Operators use downhole hardware to filter, condition, manipulate, and redirect harmful solids & gas in oil & gas wells. However, other agents of destruction downhole must be confronted with chemicals.

Surface chemical treatments are costly, but common practice. Treating critical hardware in pumping zones and production fluid within the tubing string can prove difficult.

Obstructions to effective surface treatment

- New drills
- Flowing wells
- High fluid levels
- High gas volume
- ESP intake design
- Pumping below a packer
- Achieving flow through capillary string



OSI understands the lack of effective chemical treatment programs hinder efficient pumping operations.

OSI APPROACH

Using a variety of laboratory testing capabilities in fluid & well analysis, OSI minimizes destructive downhole agents with targeted treatment & harnessing the knowledge of chemistry. OSI staff work with producer partners to achieve effective & on going real time solutions long after the tool is installed.

Hardware at risk

- Paraffin, Asphaltene, Resins.
- Scale
- Corrosion
- Defoamer
- Silver Bullet
- Biocide Applications

Well specific formulas created for each well and tagged for post-installation residual testing to ensure a slow & steady release of chemical. OSI field personnel test for customer reporting using analytical procedures based on A.S.T.M, N.A.C.E, & A.W.W.A. published test methods.

